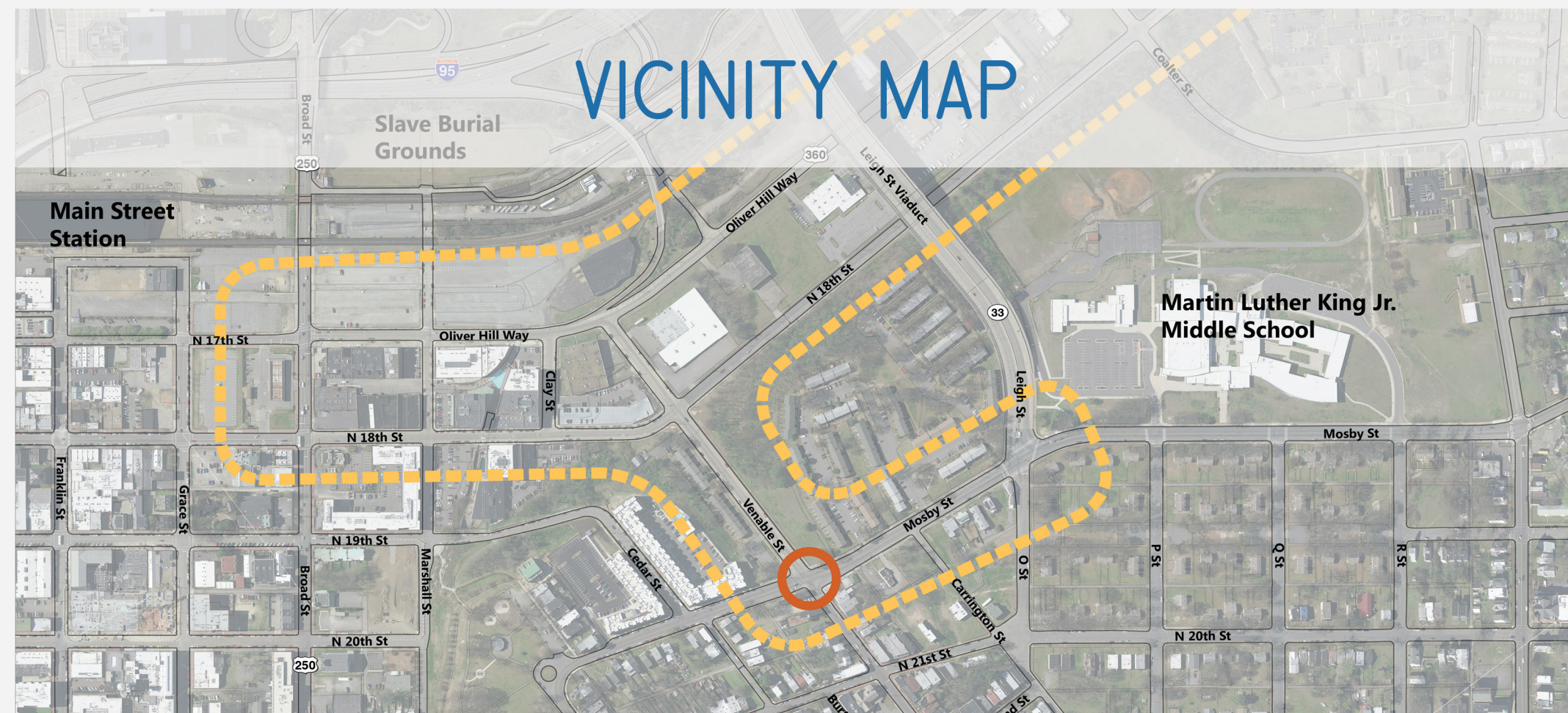
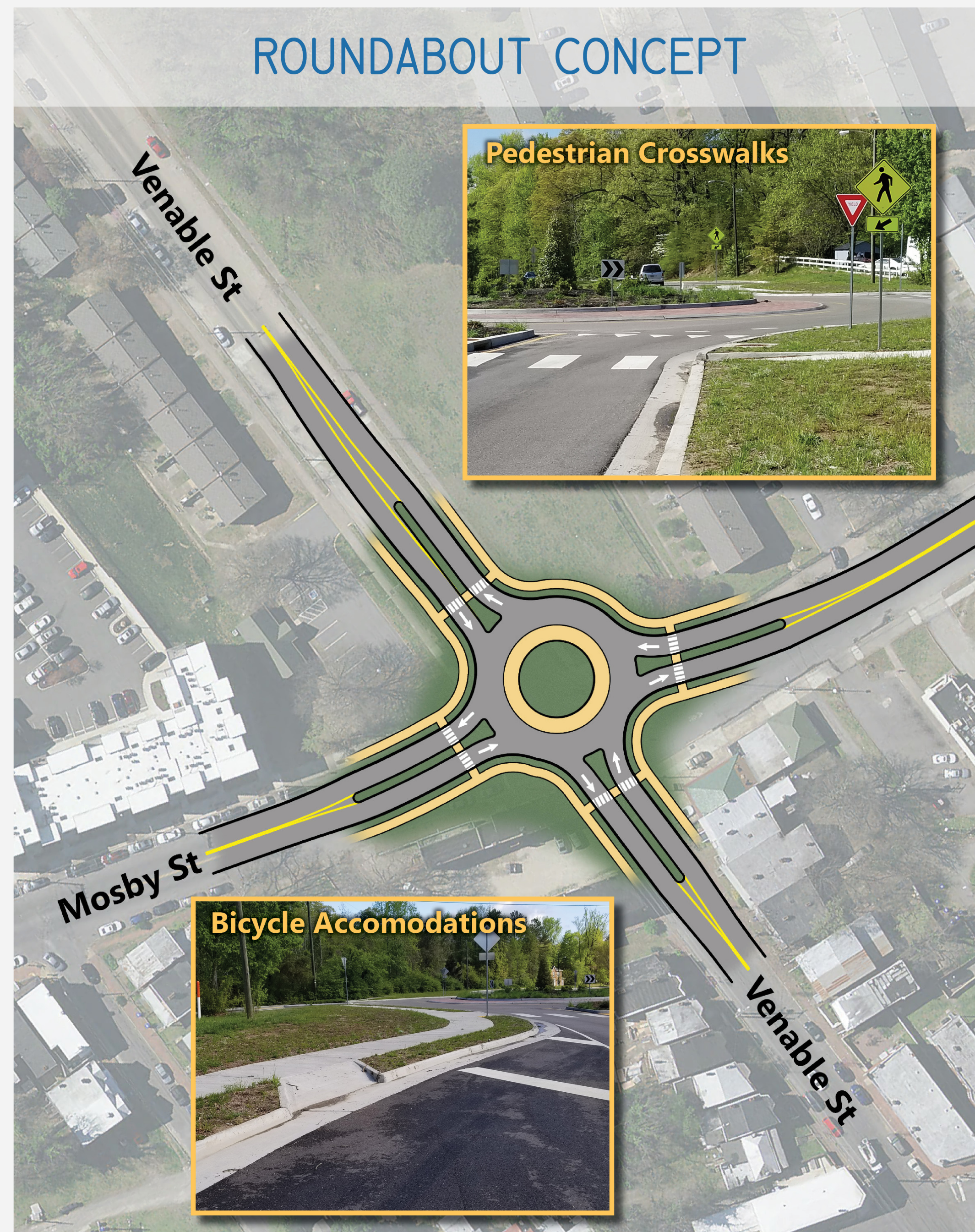


# INTERSECTION OF MOSBY STREET AND VENABLE STREET



## EXISTING CONDITIONS

- Two-way streets
- On-street parking
- No bicycle facilities
- Fading crosswalks
- Narrow sidewalks and wide streets
- Traffic signal



# SHOCKOE VALLEY STREETS IMPROVEMENT PROJECT

## RICHMOND, VIRGINIA

